

DARLENE STREIT

SANTA FE REAL ESTATE PROPERTY

505.920.8001 • dstreit@dstreit.com

417 E. Palace Avenue • Santa Fe NM 87501

6 Via Oso

4 Bedroom / 5 Bath / 3777 SF

\$2,100,000 • MLS# 201805594



Located in Black Mesa, the newest section of Las Campanas, this under construction contemporary home was designed by local architects Hoopes and Associates. Once built you will enter the 4-bedroom, 4 bath home and be impressed by the features incorporated throughout including sleek concrete floors, radiant in-floor heat and cooling, and well-placed skylights that let in the natural light. You'll enjoy relaxing or entertaining in the open and bright living area with fireplace and a glass corner to allow for unencumbered westward sightline of the Jemez mountains and spectacular sunset vistas. Just off the living area is the dining area with views to the east of the Sangre de Cristo mountains as you step out onto the portal. The well-equipped and spacious cook's

kitchen has a combination eat-in area and family room with its own fireplace adding to the ambiance. Retreat into the master suite with a large dressing room/closet and elegantly appointed master bath with soaking tub, and a spacious shower with rain shower head to add to the feeling of luxury. Enjoy evenings entertaining on the large portal overlooking the valley and the horizon in the distance. Includes an attached 3 car garage and energy efficient extras such as passive solar design. Situated just minutes north of Santa Fe's galleries, shops and restaurants and with easy access to 599, this home was designed and sited for taking advantage of the amazing views and incorporating them into the layout.







Contemporary Style in Las Campanas

- 4 Bedrooms
- Baths: 2 Full, 2 Three Quarter, 1 Half
- 3777 Sq. Ft.
- 1.72 Acres
- Under Construction
- Frame Construction *
- Flat Roof
- 3 Garage Spaces, 2 Off Street Spaces
- 3 Fireplaces
- Gas Cooking
- Radiant In Floor Heating
- Radiant In Floor Cooling
- Community Sewer
- Community Water
- Internet: Cable
- HOA Fees: In 2018, \$2790 Per Year
- HOA Fees Cover: Community Area & Road Maintenance, Security
- Insulated Windows
- Landscaped
- Security System
- Water Softener
- EnergyStar Appliances
- Passive Solar Design

**Buyer to Verify*

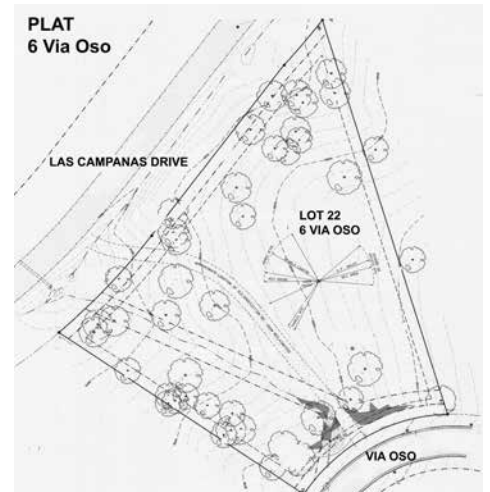
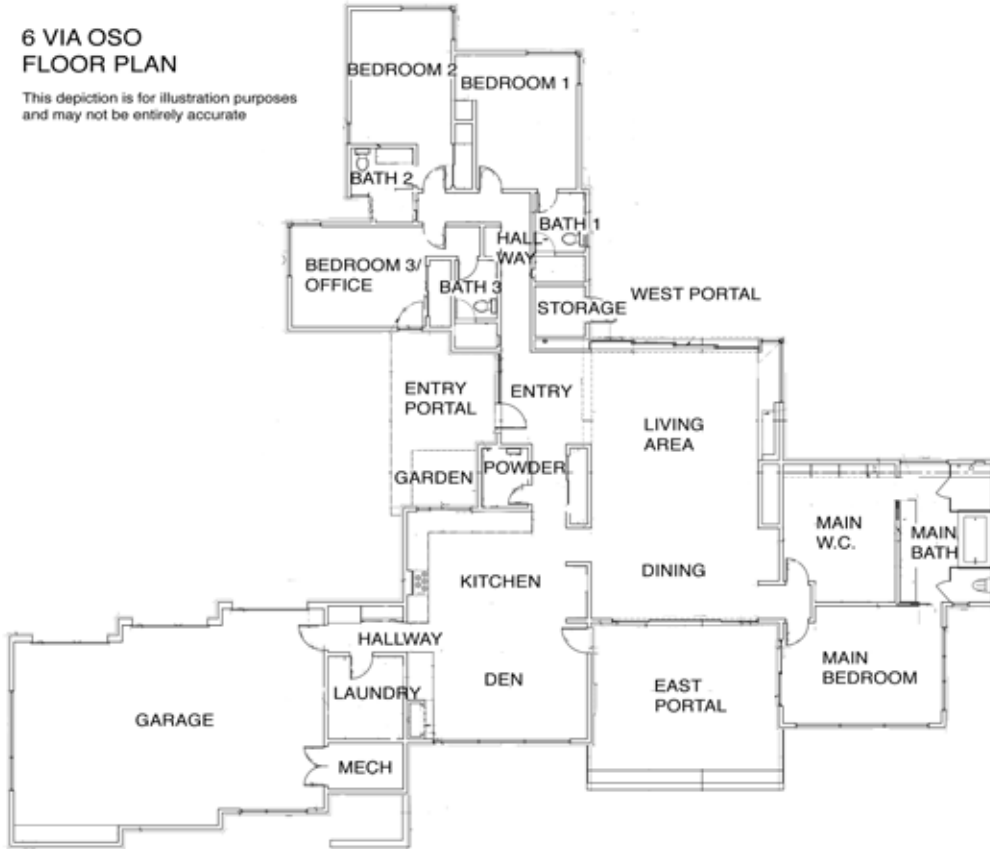


6 Via Oso

4 Bedroom / 5 Bath / 3777 SF ▪ \$2,100,000 ▪ MLS# 201805594

6 VIA OSO FLOOR PLAN

This depiction is for illustration purposes
and may not be entirely accurate



DARLENE STREIT

SANTA FE REAL ESTATE PROPERTY

505.920.8001 ▪ dstreit@dstreit.com

417 E. Palace Avenue ▪ Santa Fe NM 87501



LISTINGS

Scan this QR Code with your
mobile phone's camera to view
Darlene's and all listings online.

Or go to:
SantaFeRealEstateProperty.com

To view additional photos of this property visit: SantaFeRealEstateProperty.com

Sotheby's International Realty and the Sotheby's International Realty logo are registered (or unregistered) service marks used with permission. Operated by Sotheby's International Realty, Inc. Real estate agents affiliated with Sotheby's International Realty, Inc. are independent contractor sales associates and are not employees of Sotheby's International Realty, Inc.

This material is based on information which we consider reliable, but because it has been supplied by third parties, we cannot represent that it is accurate or complete, and it should not be relied upon as such. This offering is subject to errors, omissions, change of price, or withdrawal without notice. EQUAL HOUSING OPPORTUNITY.

Sotheby's

INTERNATIONAL REALTY

326 Grant Ave, Santa Fe, NM 87501
505-988-2533