

# DARLENE STREIT

SANTA FE REAL ESTATE PROPERTY

505.920.8001 • dstreit@dstreit.com

417 E. Palace Avenue • Santa Fe NM 87501

## 73 Condesa Rd

1.026 Acres

\$60,000 • MLS# 201803473



Find yourself relaxing while watching the golden sunsets in Eldorado just minutes southeast of Santa Fe. One of the few remaining vacant lots, this parcel of land of about an acre is dotted with trees, has public utilities to the property line, and stunning Sangre de Cristo and Jemez views. Unique opportunity to build a new home among the rolling hills, in the quaint and thriving community of Eldorado de Santa Fe. Enjoy easy access to paved roads, convenient local shopping, dining, and horse stables near the entrance to the subdivision. Community facilities include a clubhouse and pool and there are even hiking

trails among the foothills for residents, maintained by the community association. Excellent elementary/middle school, and one of the largest passive solar energy communities in the country. Eldorado is a community of artists and entrepreneurs with a strong emphasis on preserving open space and the surrounding beauty that has drawn so many to the area. The Amtrak train stop in Lamy, and the Galisteo Basin with its own hiking trails, are not far away. And Santa Fe, with all of its cultural attractions, is only a short drive away.



# 73 Condesa Rd

1.026 Acres ▪ \$60,000 ▪ MLS# 201803473

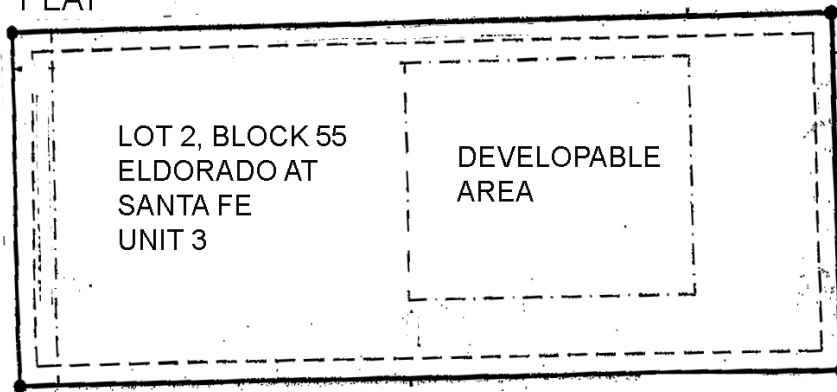
## Features

- 1.026 Acres
- Septic Required
- Community Water
- HOA Fees: \$460 Per Year
- Cul de Sac
- Views
- Solar Exposure



73 CONDESA  
PLAT

This depiction is for illustration purposes  
and may not be entirely accurate



## DARLENE STREIT

SANTA FE REAL ESTATE PROPERTY

505.920.8001 ▪ [dstreit@dstreit.com](mailto:dstreit@dstreit.com)  
417 E. Palace Avenue ▪ Santa Fe NM 87501



LISTINGS

Scan these QR Codes to view  
Darlene's listings online or to  
download our mobile app.

OR text DSTREIT to 87778,  
or go to: [m.sir.com/dstreit](http://m.sir.com/dstreit)



APP

To view additional photos of this property visit: [SantaFeRealEstateProperty.com](http://SantaFeRealEstateProperty.com)

Sotheby's International Realty and the Sotheby's International Realty logo are registered (or unregistered) service marks used with permission. Operated by Sotheby's International Realty, Inc. Real estate agents affiliated with Sotheby's International Realty, Inc. are independent contractor sales associates and are not employees of Sotheby's International Realty, Inc.

This material is based on information which we consider reliable, but because it has been supplied by third parties, we cannot represent that it is accurate or complete, and it should not be relied upon as such. This offering is subject to errors, omissions, change of price, or withdrawal without notice. EQUAL HOUSING OPPORTUNITY.

## Sotheby's

INTERNATIONAL REALTY

326 Grant Ave, Santa Fe, NM 87501  
505-988-2533