

36 Valle de Suerte

3 Bedroom / 3 Bath / 2560 SF • \$660,000 • MLS# 201901594

DARLENE STREIT

SANTA FE REAL ESTATE PROPERTY

505.920.8001 • dstreit@dstreit.com

417 E. Palace Avenue • Santa Fe NM 87501

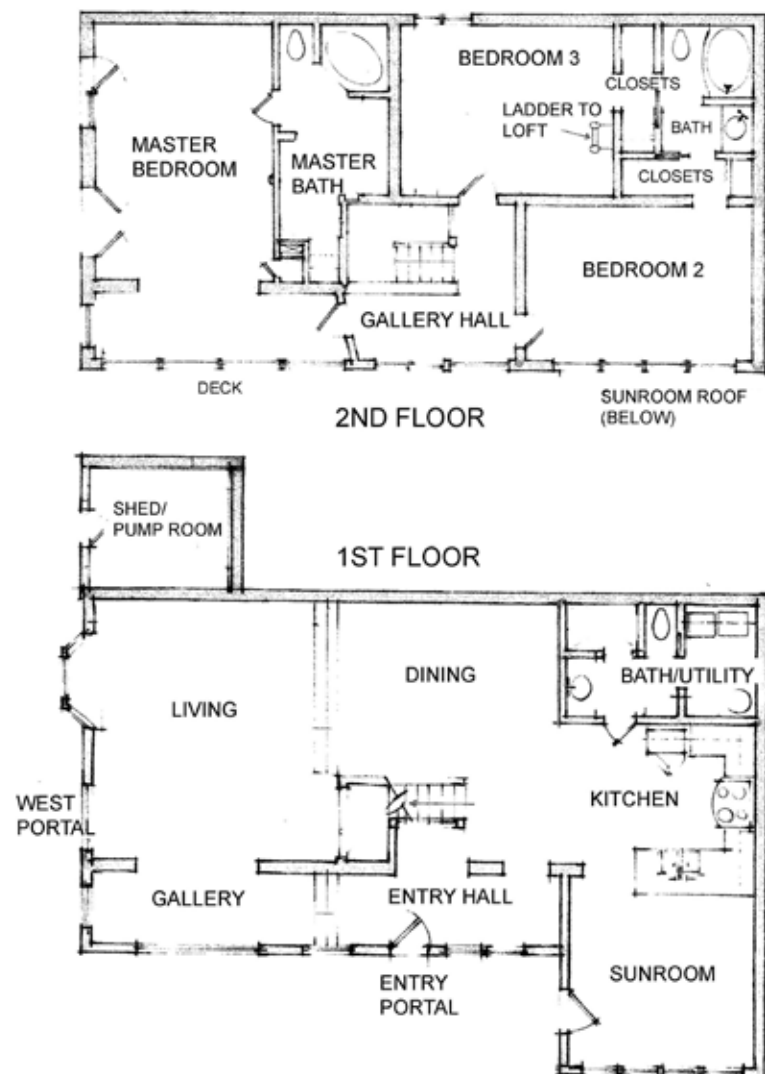
36 Valle de Suerte

3 Bedroom / 3 Bath / 2560 SF

\$660,000 • MLS# 201901594

36 VALLE DE SUERTE FLOOR PLAN

This depiction is for illustration purposes and may not be entirely accurate



36 VALLE DE SUERTE PLAT



This depiction is for illustration purposes and may not be entirely accurate



Set on a hilltop near the Four Seasons Resort in Tesuque, this updated 3 bed 3 bath 2-story home with gorgeous views is an adventurous nature-lover's paradise in a private, rustic setting on 5 acres. The flexible, open main level with high wood-beamed herringbone ceilings has brick and tile floors, built-in shelving, plenty of room for entertaining, plus steam shower bath. A warming pellet stove in the living room adds to the ambiance. The kitchen, accented with Talavera tile, has ample cabinet space, breakfast bar and Saltillo tile floors into an adjacent sunroom. Wake up to picturesque surroundings in the spacious upstairs master bedroom with en-suite bath including jetted tub. The 2nd level, with recently refinished solid ash wood floors throughout, adds a guest

bedroom with amazing views and a 3rd bedroom/office plus loft, and wraparound deck. The portal below extends to a ramada-covered flagstone patio to relax and enjoy the sweeping vistas of the Sangre de Cristo and Jemez mountains and the Tesuque Valley by day and star-gaze at night. Just a few of the special features are passive solar design, hand-troweled plaster walls, double-thick solid wood doors and a hard-wired security system. It has a terraced yard with gardens and fruit trees, recently regraded/resurfaced drive, sunken fire pit, pebble pond and custom portal light sconces. With front-door access to miles of hiking trails in the surrounding National Forest, you're close to both nature and downtown Santa Fe.



DARLENE STREIT

SANTA FE REAL ESTATE PROPERTY

505.920.8001 • dstreit@dstreit.com

417 E. Palace Avenue • Santa Fe NM 87501



LISTINGS

Scan these QR Codes to view Darlene's listings online or to download our mobile app.

OR text DSTREIT to 87778, or go to: m.sir.com/dstreit



APP

To view additional photos of this property visit: SantaFeRealEstateProperty.com

Sotheby's International Realty and the Sotheby's International Realty logo are registered (or unregistered) service marks used with permission. Operated by Sotheby's International Realty, Inc. Real estate agents affiliated with Sotheby's International Realty, Inc. are independent contractor sales associates and are not employees of Sotheby's International Realty, Inc.

This material is based on information which we consider reliable, but because it has been supplied by third parties, we cannot represent that it is accurate or complete, and it should not be relied upon as such. This offering is subject to errors, omissions, change of price, or withdrawal without notice. EQUAL HOUSING OPPORTUNITY.

Sotheby's

INTERNATIONAL REALTY

326 Grant Ave, Santa Fe, NM 87501

505-988-2533





Hilltop 3 Bed/3 Bath Home Near Tesuque

- 3 Bedrooms
 - Baths: 2 Full, 1 Three Quarter
 - 2560 Sq. Ft.
 - 5.11 Acres
 - Built in 1984
 - Block, Frame, Stucco Construction *
 - Metal, Propanel, Pitched Roof
 - 4+ Private Parking Spaces
 - Brick, Tile, Vinyl, Wood Floors
 - Electric Cooking
 - Heating: Passive Solar, Wood Stove, Baseboard Electric, Pellet Stove
 - Cooling: Ductless Cooling in One Room
 - Septic
 - Shared Well
 - Approx \$200 Per Year to Annual Well Fund
 - Internet: DSL, Satellite Dish
 - Insulated Windows
 - Xeriscaping
 - Security System
 - Low Flow Fixtures
 - Low VOC Finishes
 - Steam Shower
 - Surrounded on 3 Sides by National Forest/Wilderness
- *Buyer to Verify*

