

# 3312 Camino Lisa

3 Bedroom / 4 Bath / 4200 SF • \$699,000 • MLS# 201900241

# DARLENE STREIT

SANTA FE REAL ESTATE PROPERTY

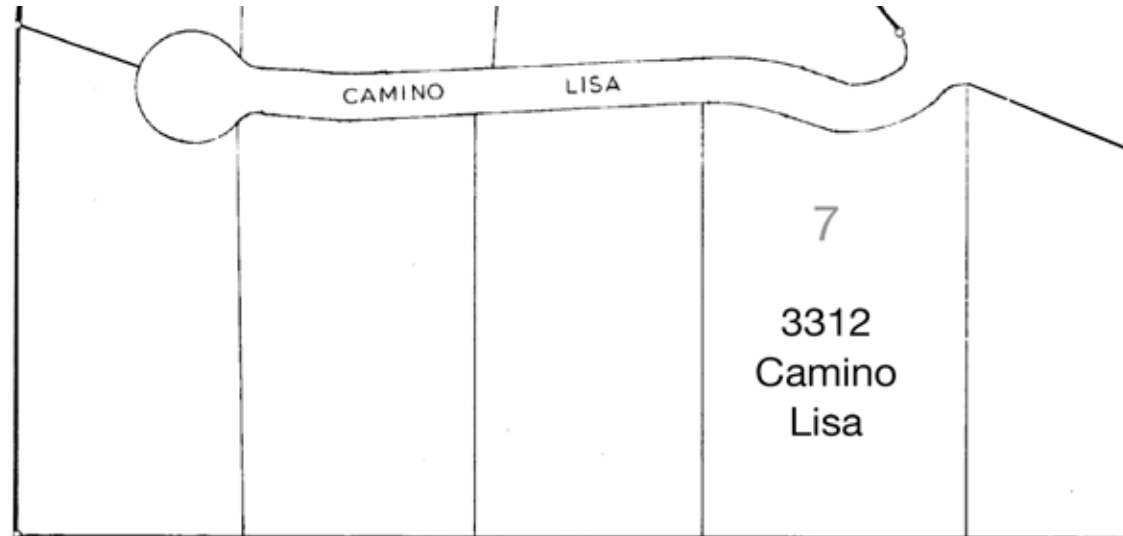
505.920.8001 • dstreit@dstreit.com

417 E. Palace Avenue • Santa Fe NM 87501

# 3312 Camino Lisa

3 Bedroom / 4 Bath / 4200 SF

\$699,000 • MLS# 201900241



## PLAT

This depiction is for illustration purposes and may not be entirely accurate.



## DARLENE STREIT

SANTA FE REAL ESTATE PROPERTY

505.920.8001 • dstreit@dstreit.com

417 E. Palace Avenue • Santa Fe NM 87501



LISTINGS

Scan these QR Codes to view Darlene's listings online or to download our mobile app.

OR text DSTREIT to 87778, or go to: [m.sir.com/dstreit](http://m.sir.com/dstreit)



APP

To view additional photos of this property visit: [SantaFeRealEstateProperty.com](http://SantaFeRealEstateProperty.com)

This 3 bedroom, 4 bath mountainside retreat offers stunning views of nature and is ideally located just minutes from Ten Thousand Waves, Ski Santa Fe and the Santa Fe Plaza. Recently re-constructed and decorated by local architects and designers, this warm, wood-accented sanctuary offers sweeping views of the valley and the national pine forests surrounding it. With two stories, three spacious living areas, a media room and 3 multi-purpose rooms, you'll enjoy versatile options for entertaining, hosting guests or setting up a home office or studio. Master suites on each of the two floors feature over-sized custom showers and rich textural stone and tile accents. An upstairs bedroom provides an additional option for guests. On the main level, the primary

kitchen is designed with decorative cabinets, wood floors, stainless steel appliances and plenty of counter space. Downstairs, you'll find a full second kitchen with its own built-in refrigerator and wine cooler, a wet bar and brick floors. A Balinese-style hut at the top of the property is the perfect spot for alfresco meals, relaxing, or quiet contemplation, surrounded by the beauty of nature. Artistic wood detailing, hand-carved doors, an abundance of built-ins, carved stone bathtubs from Bali and a gorgeous, stone-textured living room fireplace are only a few of the unique features that make this mountain Shangri-la such an appealing and welcoming retreat.

Sotheby's International Realty and the Sotheby's International Realty logo are registered (or unregistered) service marks used with permission. Operated by Sotheby's International Realty, Inc. Real estate agents affiliated with Sotheby's International Realty, Inc. are independent contractor sales associates and are not employees of Sotheby's International Realty, Inc.

This material is based on information which we consider reliable, but because it has been supplied by third parties, we cannot represent that it is accurate or complete, and it should not be relied upon as such. This offering is subject to errors, omissions, change of price, or withdrawal without notice. EQUAL HOUSING OPPORTUNITY.

## Sotheby's

INTERNATIONAL REALTY

326 Grant Ave, Santa Fe, NM 87501

505-988-2533





## Mountainside Retreat

- 3 Bedrooms
- Baths: 4 Full
- 4200 Sq. Ft.
- 1.77 Acres
- Frame, Stucco Construction \*
- Flat, Pitched Roofs
- 5 Off Street Parking Spaces
- 2 Fireplaces
- Brick, Tile, Wood Floors
- Electric Cooking
- Baseboard Heating
- Septic
- Community Water
- Internet: DSL, Wireless
- Landscaped
- Security System

*\*Buyer to Verify*

