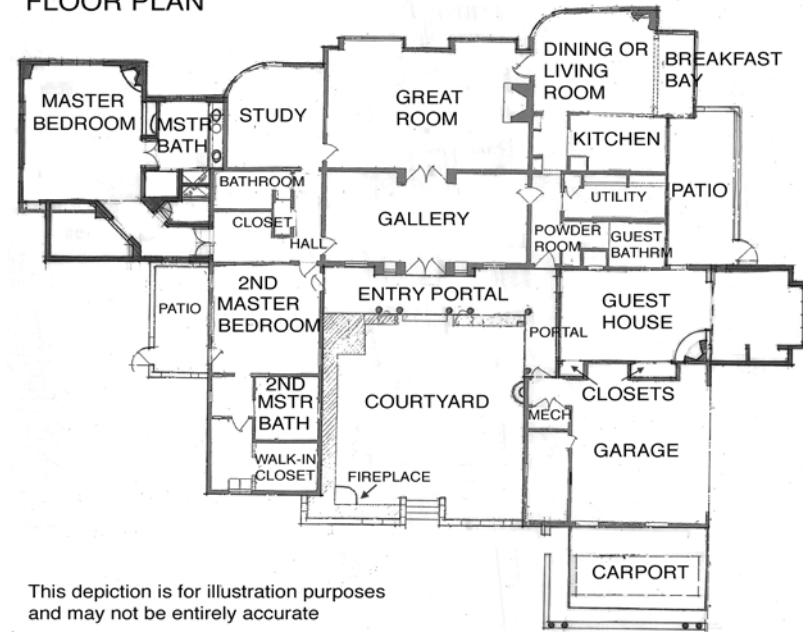


18 N Sparrow Lane Lot 87

3 Bedroom / 5 Bath / 4500 SF • \$950,000 • MLS# 201805043

18 NORTH SPARROW FLOOR PLAN



This depiction is for illustration purposes and may not be entirely accurate



DARLENE STREIT

SANTA FE REAL ESTATE PROPERTY

505.920.8001 • dstreit@dstreit.com

417 E. Palace Avenue • Santa Fe NM 87501

18 N Sparrow Lane Lot 87

3 Bedroom / 5 Bath / 4500 SF

\$950,000 • MLS# 201805043



Set on almost 2 acres in the just off of Camino La Tierra, this single level 3 bedroom 5 bath home with attached guest house combines traditional charm and classic lines in a lovely hacienda with covered portals. Enter through the gates into the inviting courtyard and take in the delightful landscaping surrounding the brick patio where you can relax or entertain. Step inside to the spacious entry, perfect for displaying art, that opens to the impressive great room with high ceilings, gorgeous beams with corbels and a grand fireplace as the centerpiece. Perfect for hosting gatherings, the open kitchen has a hearth room with fireplace and informal dining area, a breakfast bar, and a wet bar. The recent master suite addition has a fireplace of its

own, a master bath with custom tile and step-in shower. Other bedrooms, one of which was the former master suite with its own bathroom including a sauna, are roomy and bright. There's an office space with built-in shelving and cabinets, and a library that could be a third bedroom or studio. The guest suite was a recent addition that will allow visitors plenty of privacy with their own entrance and kitchenette. You'll enjoy the natural surroundings, winding paths, and ample outdoor spaces for entertaining. Stunning sunrise, sunset and mountain views complete the package as you make this home your place in the sun. Near the La Tierra trailhead and minutes from Santa Fe Plaza, it's a perfect retreat among the pinon and juniper trees.



DARLENE STREIT

SANTA FE REAL ESTATE PROPERTY

505.920.8001 • dstreit@dstreit.com

417 E. Palace Avenue • Santa Fe NM 87501



LISTINGS

Scan these QR Codes to view Darlene's listings online or to download our mobile app.

OR text DSTREIT to 87778, or go to: m.sir.com/dstreit



APP

To view additional photos of this property visit: SantaFeRealEstateProperty.com

Sotheby's International Realty and the Sotheby's International Realty logo are registered (or unregistered) service marks used with permission. Operated by Sotheby's International Realty, Inc. Real estate agents affiliated with Sotheby's International Realty, Inc. are independent contractor sales associates and are not employees of Sotheby's International Realty, Inc.

This material is based on information which we consider reliable, but because it has been supplied by third parties, we cannot represent that it is accurate or complete, and it should not be relied upon as such. This offering is subject to errors, omissions, change of price, or withdrawal without notice. EQUAL HOUSING OPPORTUNITY.

Sotheby's

INTERNATIONAL REALTY

326 Grant Ave, Santa Fe, NM 87501

505-988-2533





Traditional Charm, Classic Lines

- 3 Bedrooms
- Baths: 4 Full, 1 Half
- Main House 3900 Sq. Ft.
- Guest House 600 Sq. Ft.
- 1.79 Acres
- Built in 1986
- Frame, Stucco Construction *
- Flat, Tar & Gravel Roof
- 2 Garage Spaces / 1 Carport
- 5 Fireplaces
- Gas Cooking
- Gas, Radiant, Baseboard (Hot Water) Heating
- Refrigerator Central Cooling
- Septic
- County Water
- Internet: Cable
- HOA Fees: \$250 Per Year
- HOA Fees Cover: Road Maintenance, Tennis Courts
- Insulated Windows
- Sauna
- Landscaped
- Drip/Sprinkler System

**Buyer to Verify*

