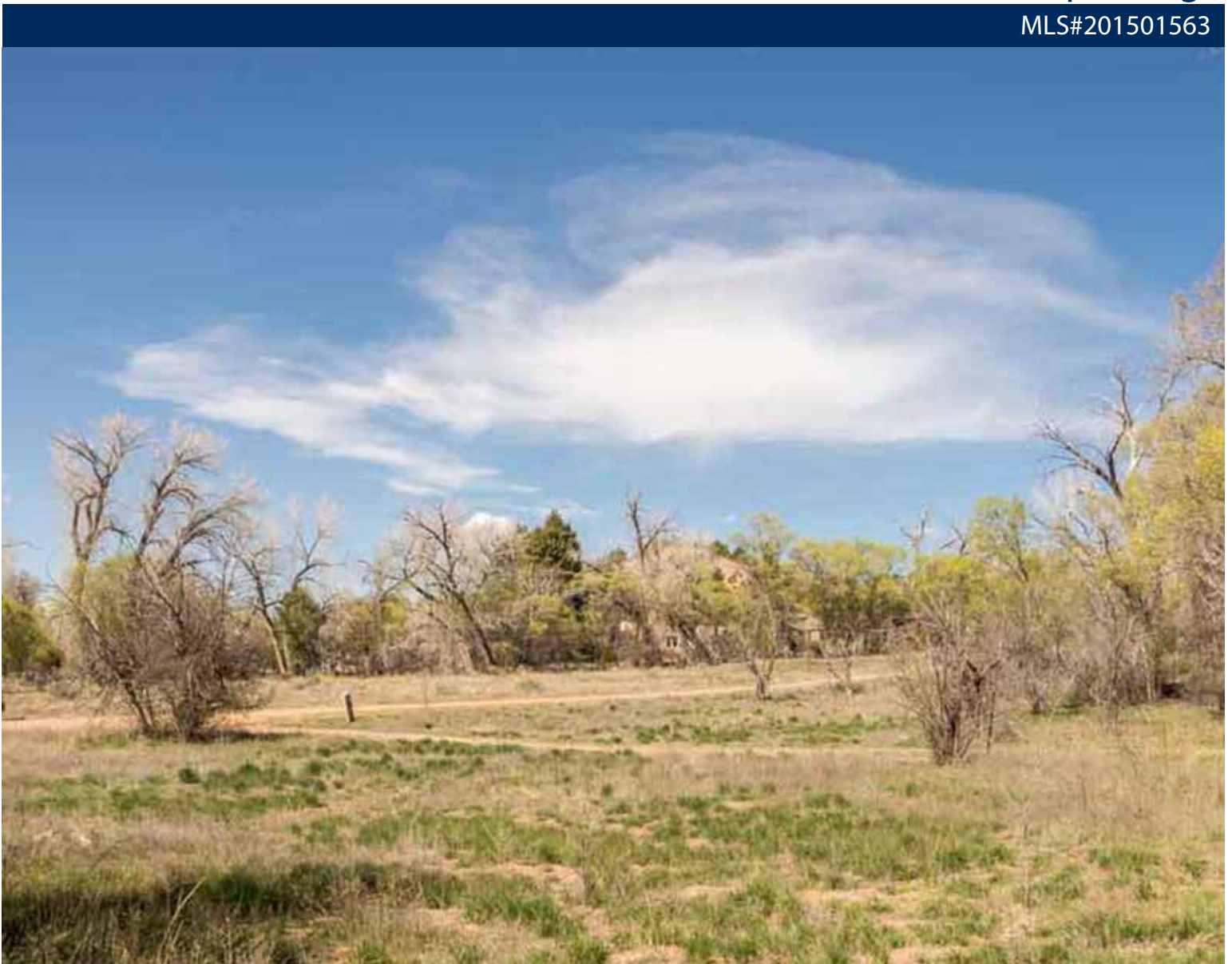


DARLENE L. STREIT

SANTA FE REAL ESTATE PROPERTY

1477 Bishops Lodge

MLS#201501563



\$295,900



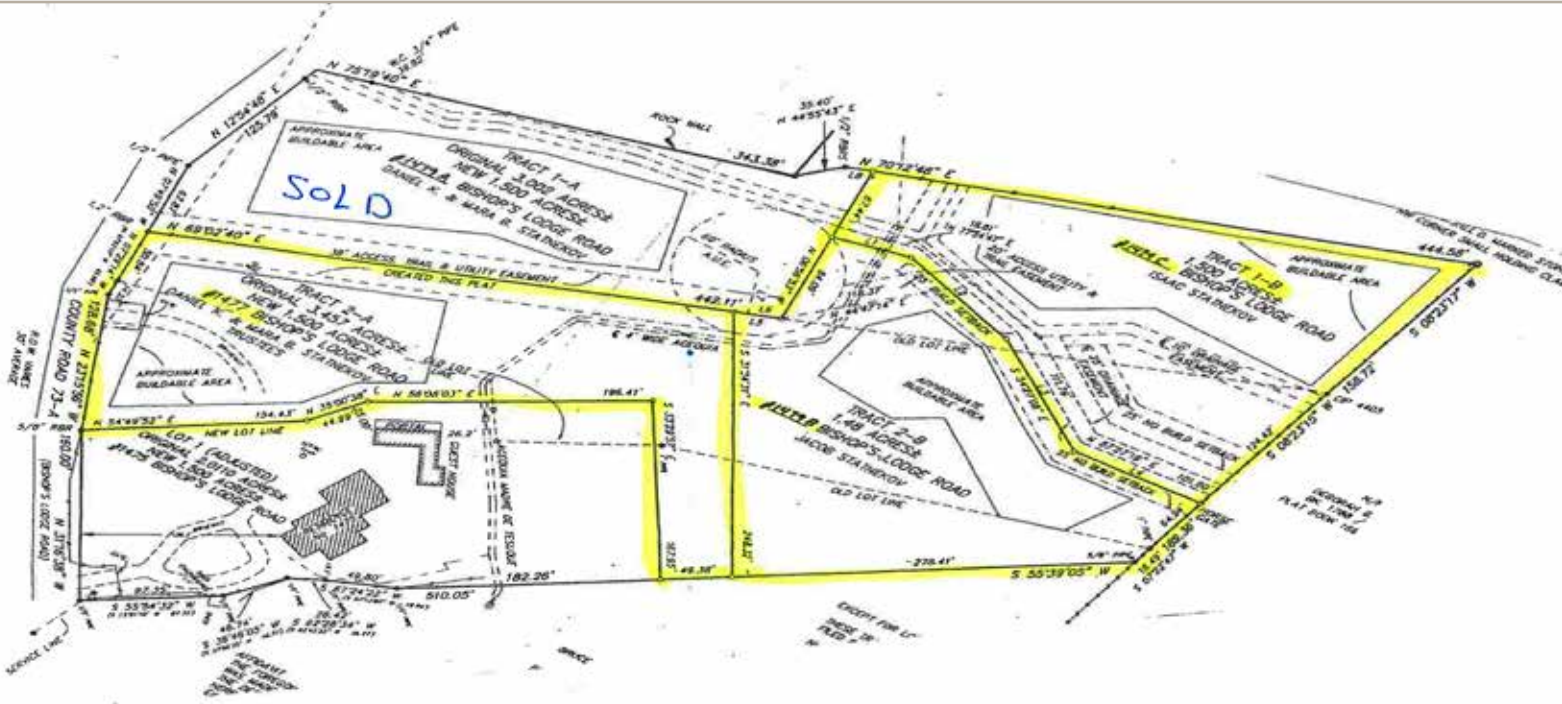
Nestled in along the meandering curves of historic Bishop's Lodge Road, this 1.5 +/- acre lot lies in the heart of the Tesuque Valley and is the perfect complement to your new dream home and guest house or barn. Convenient, yet quaint, rural-style living is afforded you by the availability of on-site electric, natural gas, telephone AND extraordinary water rights of .75 afy from the adjudicated shared well. A fabulous location, the always wonderful Tesuque Village Market is just up the road, while the heart of Santa Fe awaits you only minutes to the south. Additional surface water rights available at \$75,000 per afy.

DARLENE L. STREIT

SANTA FE REAL ESTATE PROPERTY

1477 Bishops Lodge

MLS# 201501563



- 1.5 acres
- Natural Gas
- Well - Shared
- Septic Required
- Gated Community



Darlene Streit

Darlene Streit
505-920-8001 (best any time)
dstreit@dstreit.com

Sotheby's
INTERNATIONAL REALTY



Download our mobile app
• scan the QR code above, or
• text DSTREIT to 87778, or
• go to: m.sir.com/dstreit

Sotheby's International Realty and the Sotheby's International Realty logo are registered (or unregistered) service marks used with permission. Operated by Sotheby's International Realty, Inc. Real estate agents affiliated with Sotheby's International Realty, Inc. are independent contractor sales associates and are not employees of Sotheby's International Realty, Inc.

326 Grant Ave, Santa Fe, NM 87501 • 505-988-2533 • sothebyshomes.com/santafe

SantaFeRealEstateProperty.com

DarleneStreit.com

SantaFeLuxuryHomesAndLand.com

This material is based on information which we consider reliable, but because it has been supplied by third parties, we cannot represent that it is accurate or complete, and it should not be relied upon as such. This offering is subject to errors, omissions, change of price, or withdrawal without notice. EQUAL HOUSING OPPORTUNITY.